

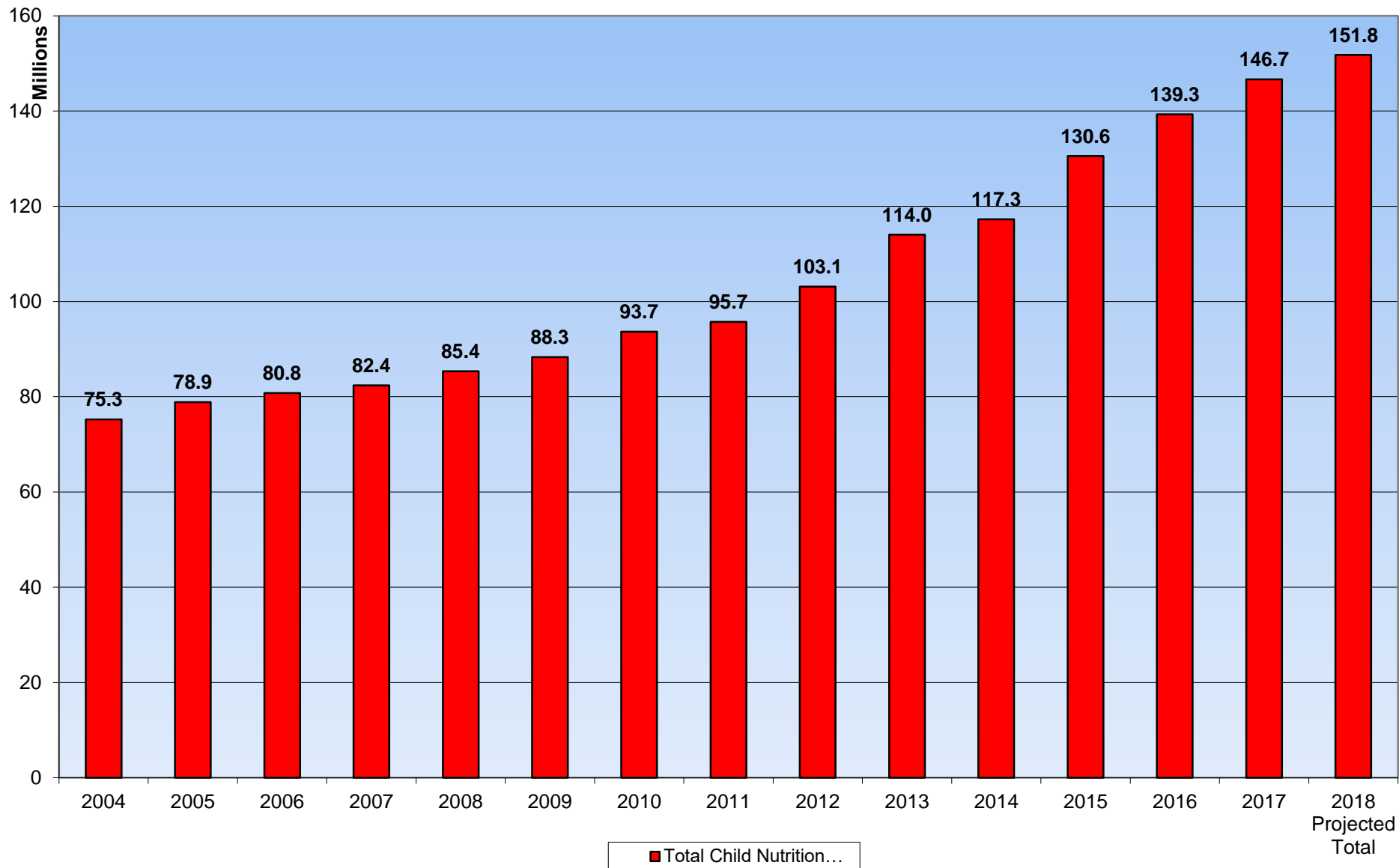


West Virginia DEPARTMENT OF
EDUCATION

Office of Child Nutrition

Financial Updates

West Virginia Office of Child Nutrition Federal Funding Trend Analysis



Federal Funding

- Breakdown of FY2018 Projected Total Funding

National School Lunch/Breakfast/Snack	131,895,385
Child & Adult Care Food Program	15,616,793
Summer Food Service Program	1,954,064
Fresh Fruit & Vegetable Program	2,095,225
Other Grants (Equipment, Farm 2 School, etc.)	213,153
Total	151,774,620

NSLP vs. CACFP

- NSLP
 - Snack only
 - Area and non area eligible snacks
- CACFP
 - Snack and Supper
 - **ONLY** Area eligible (50% or more needy)
- Reimbursements
 - .88 for area eligible snacks
 - Non area eligible snacks are claimed based on free/reduced applications
 - Supper reimbursement is 3.23

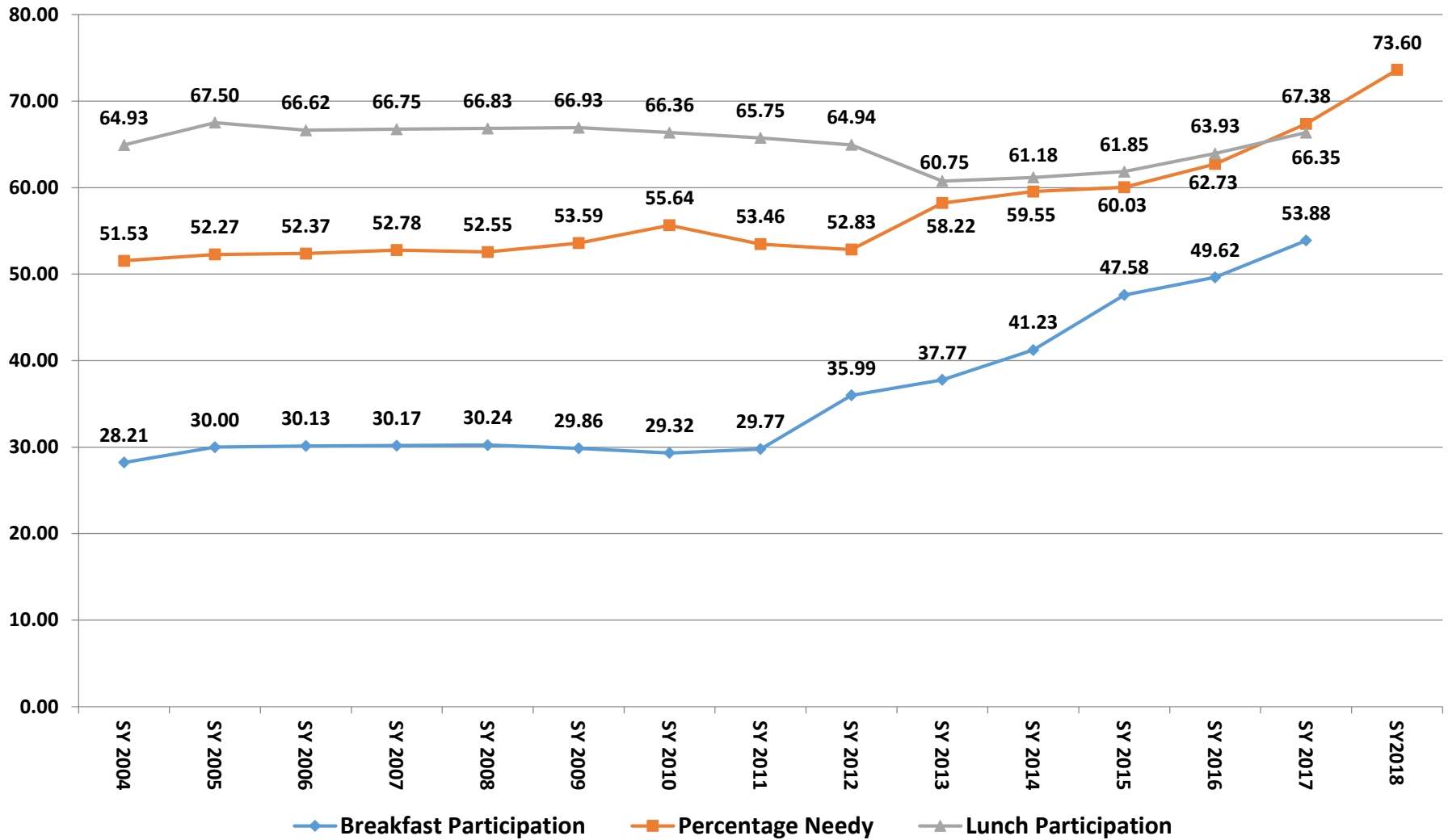
CACFP RECORDING

- CACFP Programs used by LEA's include after school at-risk snack and suppers.
- CACFP and NSLP are separate Programs and have separate projects in WVEIS that should be used for revenue and expenditures.
- The CACFP Project is 88Y5X.
 - All CACFP revenues and expenditures should be recorded to this project.

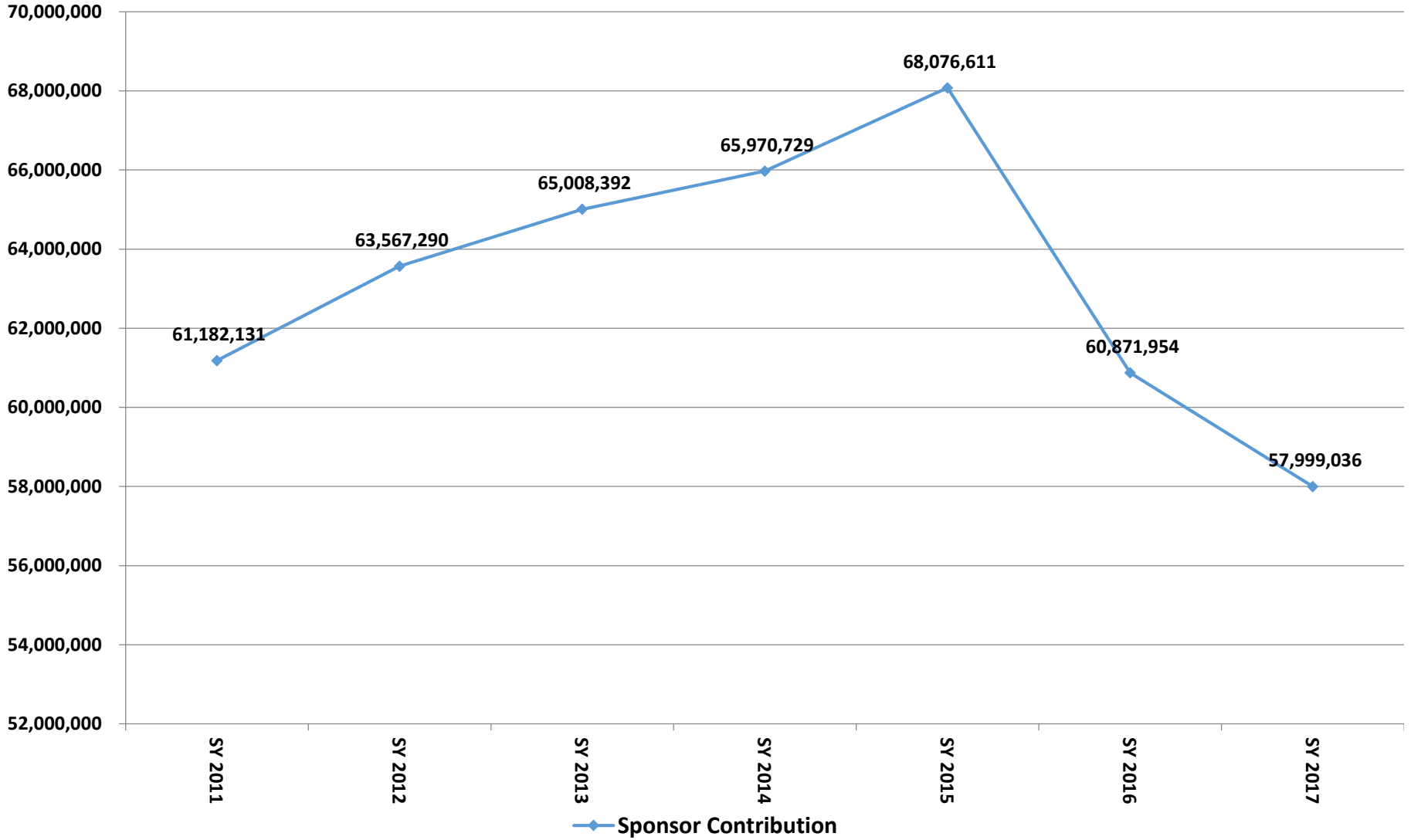
CACFP RECORDING

- In the event CACFP Food Expenditures/labor are not separated from NSLP Expenditures when originally recorded, and are recorded to the NSLP Project (88Y1X), expenditures should be transferred from the NSLP Project to the CACFP project.
- The amount of the transfer can be equal to the amount of the CACFP reimbursement revenue recording in 88Y5X.
 - This will allow the project to be zero out without having a sponsor contribution.
 - If you prefer to calculate an actual amount for food, non-food and labor expenses, and record a sponsor contribution in the CACFP project, that is also acceptable

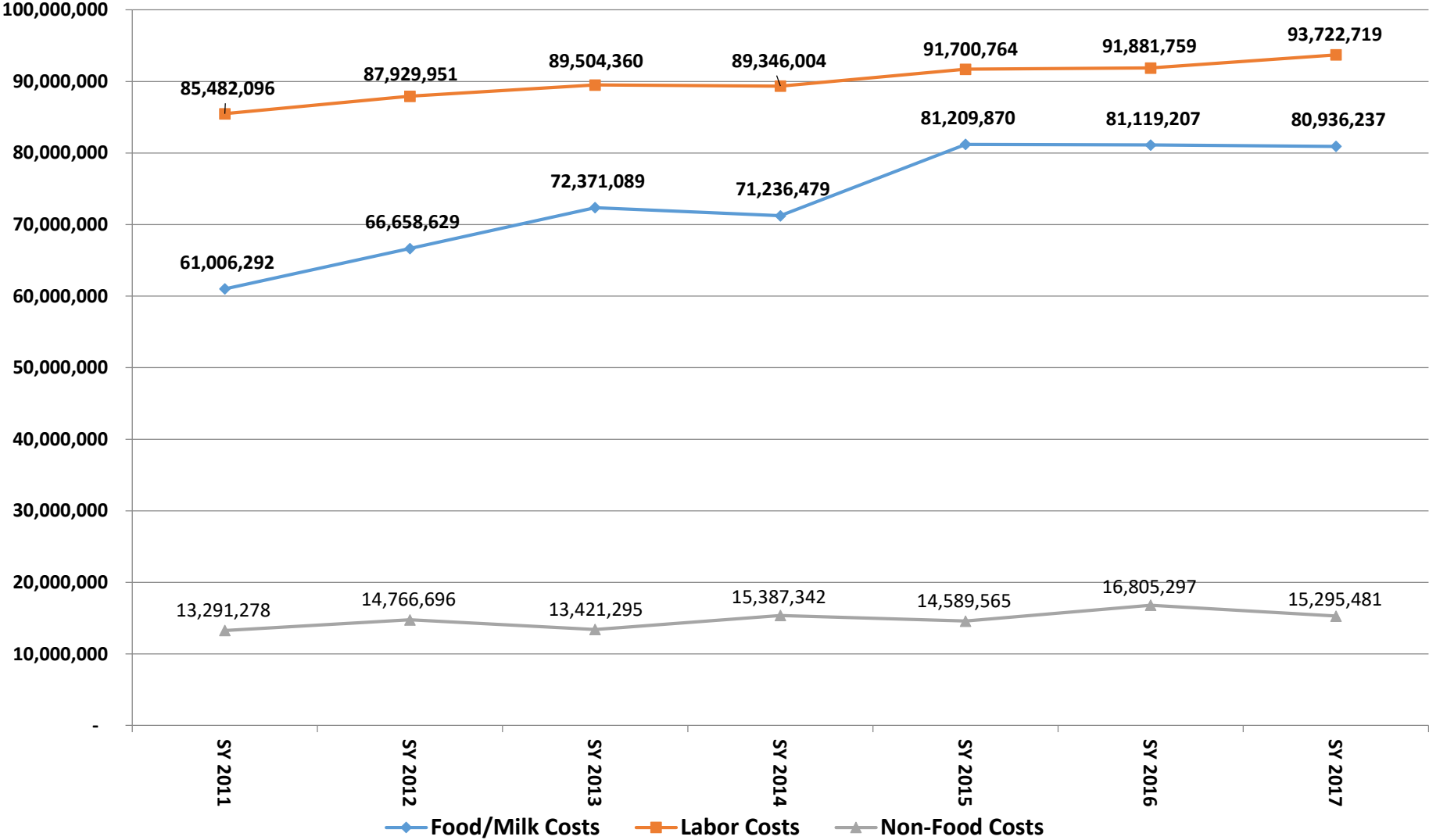
Participation VS. Needy %



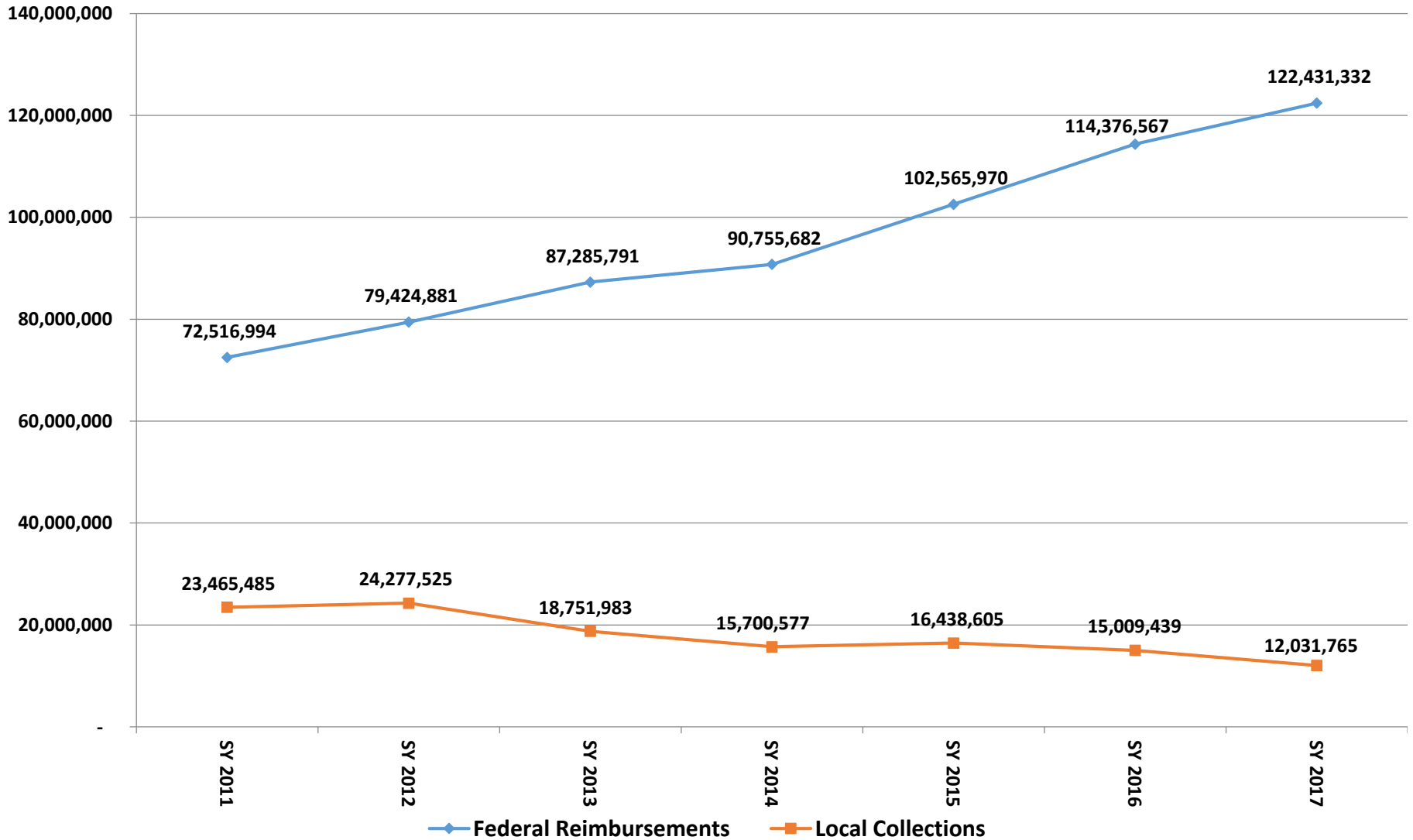
Sponsor Contribution



Food Service Cost Trend



Federal Reimbursement and Local Collection Trend



Breakfast Participation

- Innovative Breakfast Strategies
 - Grab and Go Breakfast
 - Breakfast in the Classroom
 - Breakfast after 1st Period

Breakfast/Lunch Participation

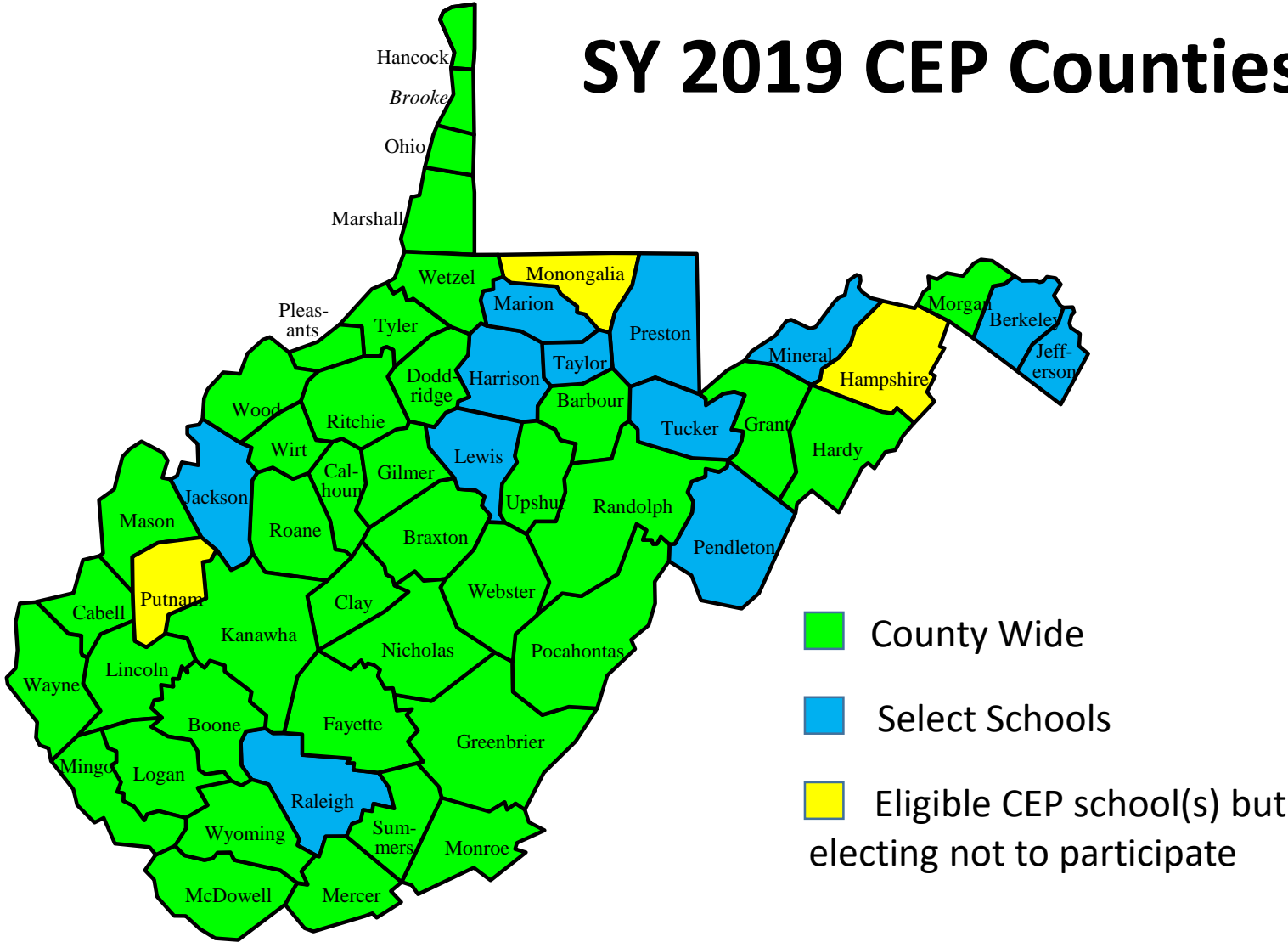
- Top 10 Highest Meal Participation Rates.
- WV Average: Breakfast 53.88% Lunch 66.35%

Breakfast		Lunch	
1.	Mercer 88.41%	1.	Wirt 82.12%
2.	Mason 81.34%	2.	McDowell 81.47%
3.	Wirt 80.41%	3.	Calhoun 80.96%
4.	Lincoln 73.09%	4.	Tyler 80.15%
5.	Gilmer 72.57%	5.	Hardy 79.43
6.	Lewis 71.27%	6.	Pleasants 79.34%
7.	McDowell 70.50%	7.	Grant 79.30%
8.	Grant 69.76%	8.	Ritchie 79.00%
9.	Fayette 69.63%	9.	Summers 78.98%
10.	Clay 69.53%	10.	Gilmer 78.58%

CEP Statistics

	2012-2013	2013-2014	2014-2015	2015-2016	2016-2017	2017-2018
# of counties with at least 1 CEP Eligible School	54	52	54	54	55	55
# of counties participating in CEP	35	39	40	46	47	50
# of counties implementing CEP countywide	11	14	17	19	29	33
# of Schools Participating	283	335	374	429	458	517
Total # of Schools		688	681	686	685	665
# of students impacted	90,000	>110,000	128,041	145,702	166,202	194,499

SY 2019 CEP Counties



Questions??

Tony Crago

acrago@k12.wv.us

304-558-3396

Keri Kennedy

keri.kennedy@k12.wv.us

304-558-3396

Travis Legg

tlegg@k12.wv.us

304-558-3396